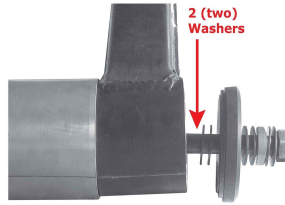


## INSTALLATION



- 1** Lubricate and push the bushing into the transition tube aligning the indicator marks.



- 2** Place 2 (two) washers under the front plate as shown.



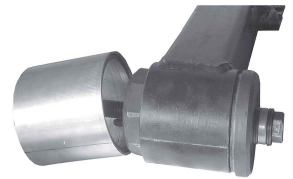
- 3** Assemble the tool as shown. (Spacer not required)



- 4** Place the concave side of the drive plate against the bushing with the 2 (two) short set screws entering the bushing voids.



- 5** Screw the bolt in clockwise. Remove the bushing using 1"-11/16 or 42 mm drive impact wrench.



- 6** The transition tube will fall away before the bushing is seated. Continue to tighten the bolt until it stops moving.

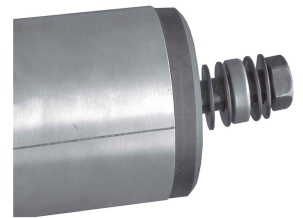
## REMOVAL



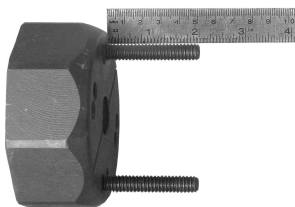
- 1** Mark the bushing orientation on the beam tube and transition tube



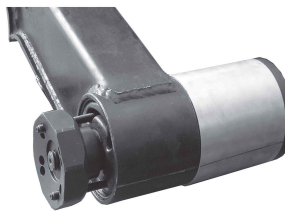
- 2** Assemble the tool as shown



- 3** Place 2 (two) washers on each side of the Pre lubricated thrust bearing use. Lubricate threads of bolt.



- 4** At least 2" of the 2 (two) long set screws must protrude from the flat side of the drive plate



- 5** Screw the bolt into the drive plate with the 2" set screws entering the bushing voids.



- 6** Screw the bolt in clockwise. Remove the bushing using 1"-11/16 or 42 mm drive impact wrench.